

# School Summary Report

## School Details

School Number:	7670	Principal:	Rosa MARCHIONDA (Acting)
School Name:	Buckley Park College	Phone Number:	03 9391 9999
School Type:	Secondary	Website:	
Open Date:	1/01/1963	Address:	59-99 Cooper Street Essendon, 3040
Teaching FTE: (2019)	68.2	Admin Region:	South-Western Victoria
Support Staff FTE: (2019)	17.7	LGA:	Moonee Valley (C)
Current Enrolments: (2019) (Feb Census)	988.0		

## Student Family Occupation (SFO) Index

No Data Available

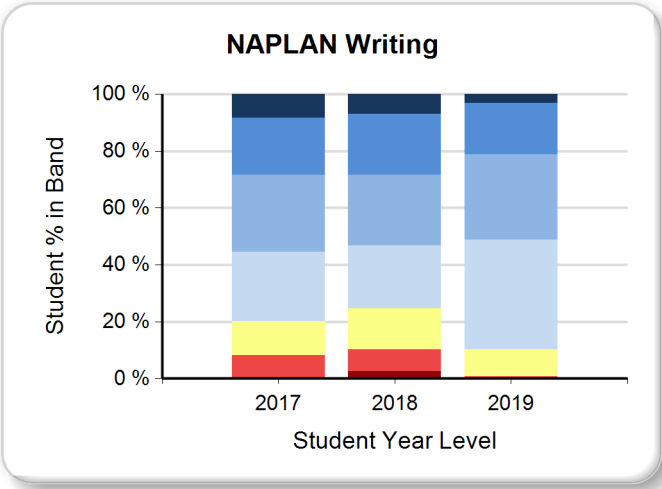
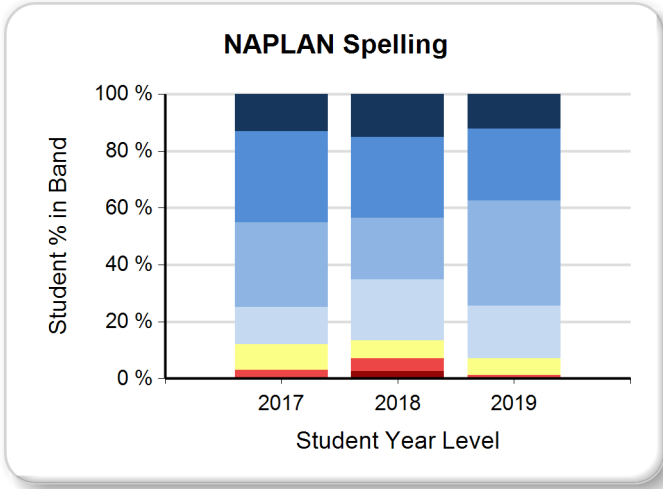
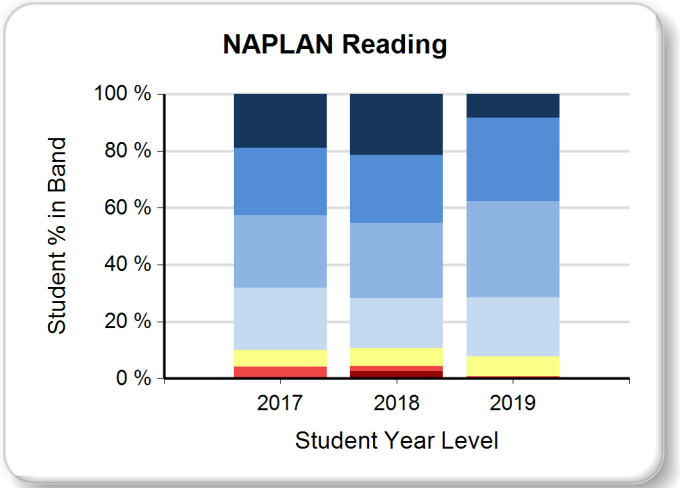
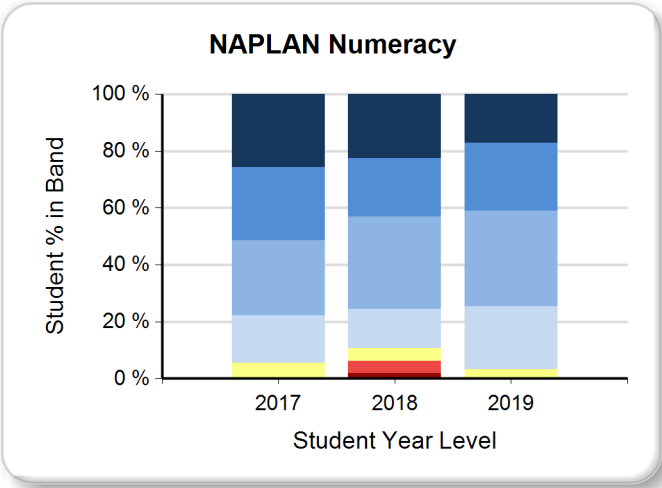
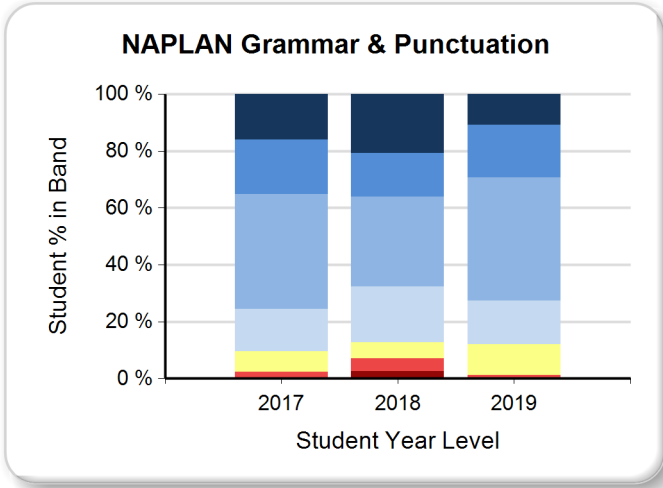
## Student Family Occupation and Education (SFOE) Index

Category	2017	2018	2019	Trend
School Level Index	0.2612	0.2513	0.2507	
School Level Band	Low	Low	Low	
State Median Index	0.4479	0.4400	0.4306	

## FTE Enrolments & Projections

	FTE Actual Enrolments - Year level			Projected Enrolments		
	2017	2018	2019	2020	2021	2022
Secondary						
Year 7	172.0	160.2	160.0	162.0	166.0	167.0
Year 8	156.0	173.0	168.0	164.0	166.0	170.0
Year 9	161.0	162.0	176.0	175.0	172.0	176.0
Year 10	155.0	165.0	168.0	182.0	180.0	177.0
Year 11	170.0	161.0	159.0	173.0	190.0	190.0
Year 12	167.7	161.0	157.0	156.0	167.0	184.0
Secondary Ungraded	0.0	0.0	0.0	0.0	0.0	0.0
<b>Grand Total</b>	<b>981.7</b>	<b>982.2</b>	<b>988.0</b>	<b>1,012.0</b>	<b>1,041.0</b>	<b>1,064.0</b>

# NAPLAN - Percentage of Students by Band by Domain, Trend 2017 to 2019 - Year 7 Students

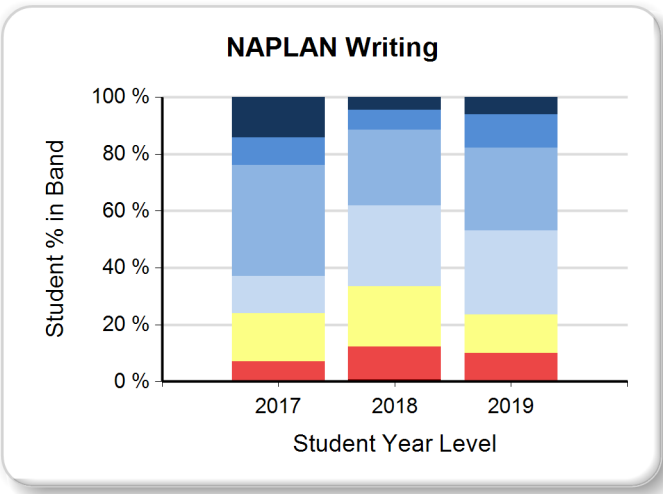
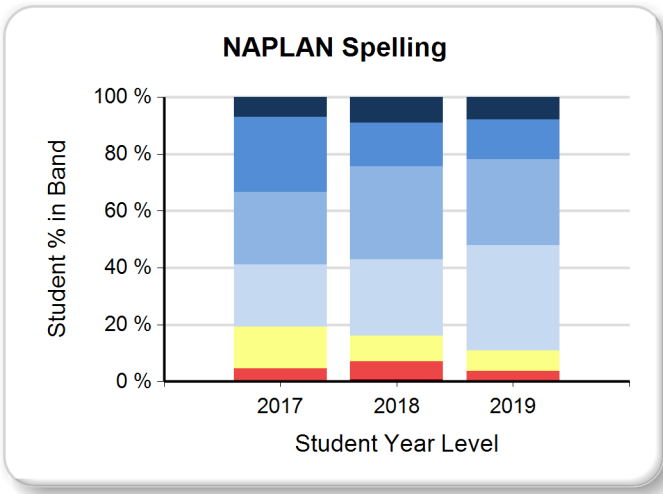
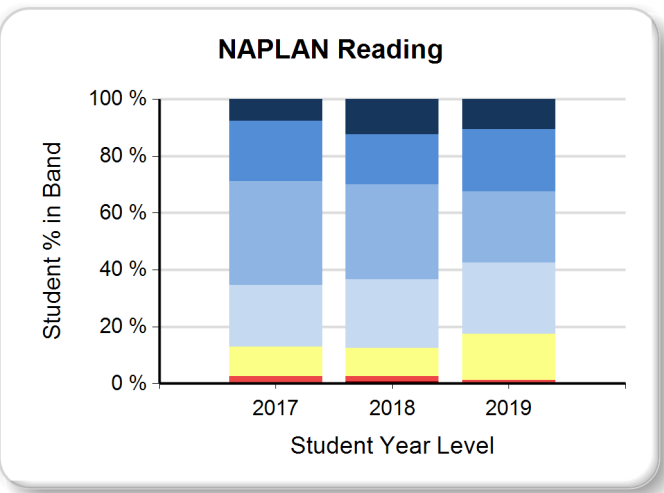
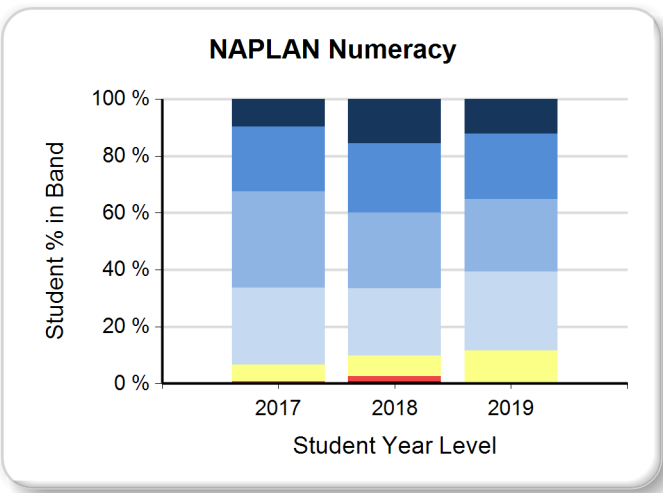
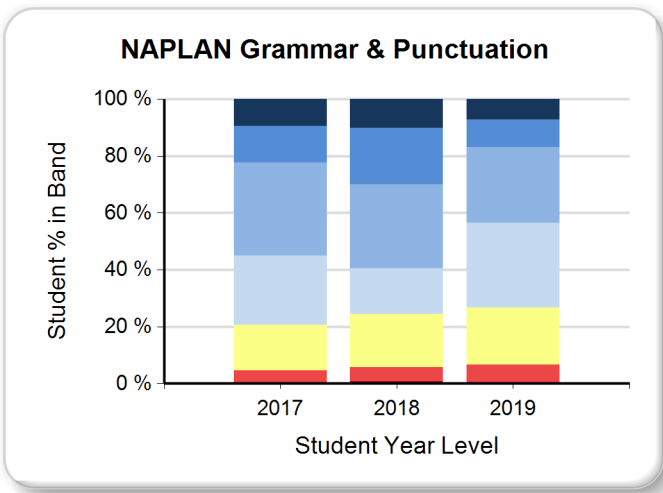


Year Level	Below NMS		At NMS	Above NMS			
Year 3	Exempt	Band 1	Band 2	Band 3	Band 4	Band 5	Band 6
Year 5	Exempt	Band 3	Band 4	Band 5	Band 6	Band 7	Band 8
Year 7	Exempt	Band 4	Band 5	Band 6	Band 7	Band 8	Band 9
Year 9	Exempt	Band 5	Band 6	Band 7	Band 8	Band 9	Band 10

## NAPLAN - Number and Percentage of Students by Band by Domain, Trend 2017 to 2019 - Year 7 Students

	Percentage of Students								Number of Students								Mean		Participation Rate	
	Year	Below NMS		At NMS	Above NMS				Below NMS		At NMS	Above NMS								
		Exempt	Band 4	Band 5	Band 6	Band 7	Band 8	Band 9	Exempt	Band 4	Band 5	Band 6	Band 7	Band 8	Band 9	School	State	Count	%	
<b>Grammar and Punctuation</b>	2017	0.0%	2.4%	7.1%	14.9%	40.5%	19.0%	16.1%	0	4	12	25	68	32	27	569.9	535.4	168	97.1%	
	2018	2.5%	4.4%	5.7%	19.6%	31.6%	15.2%	20.9%	4	7	9	31	50	24	33	569.5	536.7	158	97.5%	
	2019	0.0%	1.3%	10.8%	15.3%	43.3%	18.5%	10.8%	0	2	17	24	68	29	17	551.7	533.7	157	98.1%	
<b>Numeracy</b>	2017	0.0%	0.0%	5.4%	16.8%	26.3%	25.7%	25.7%	0	0	9	28	44	43	43	591.4	550.7	167	96.5%	
	2018	1.9%	4.4%	4.4%	13.8%	32.5%	20.6%	22.5%	3	7	7	22	52	33	36	577.7	545.3	160	98.8%	
	2019	0.0%	0.0%	3.2%	22.2%	33.5%	24.1%	17.1%	0	0	5	35	53	38	27	575.5	550.2	158	98.8%	
<b>Reading</b>	2017	0.0%	4.1%	5.9%	21.9%	25.4%	23.7%	18.9%	0	7	10	37	43	40	32	565.9	540.6	169	97.7%	
	2018	2.5%	1.9%	6.3%	17.6%	26.4%	23.9%	21.4%	4	3	10	28	42	38	34	574.0	537.5	159	98.1%	
	2019	0.0%	0.6%	7.1%	20.8%	33.8%	29.2%	8.4%	0	1	11	32	52	45	13	561.1	541.8	154	96.3%	
<b>Spelling</b>	2017	0.0%	3.0%	8.9%	13.1%	29.8%	32.1%	13.1%	0	5	15	22	50	54	22	565.1	539.8	168	97.1%	
	2018	2.5%	4.4%	6.3%	21.5%	21.5%	28.5%	15.2%	4	7	10	34	34	45	24	563.8	538.4	158	97.5%	
	2019	0.0%	1.3%	5.7%	18.5%	36.9%	25.5%	12.1%	0	2	9	29	58	40	19	564.6	539.5	157	98.1%	
<b>Writing</b>	2017	0.0%	8.3%	11.8%	24.3%	27.2%	20.1%	8.3%	0	14	20	41	46	34	14	533.5	511.2	169	97.7%	
	2018	2.5%	7.6%	14.6%	22.2%	24.7%	21.5%	7.0%	4	12	23	35	39	34	11	532.4	501.4	158	97.5%	
	2019	0.0%	0.6%	9.6%	38.5%	30.1%	17.9%	3.2%	0	1	15	60	47	28	5	537.3	512.8	156	97.5%	

# NAPLAN - Percentage of Students by Band by Domain, Trend 2017 to 2019 - Year 9 Students



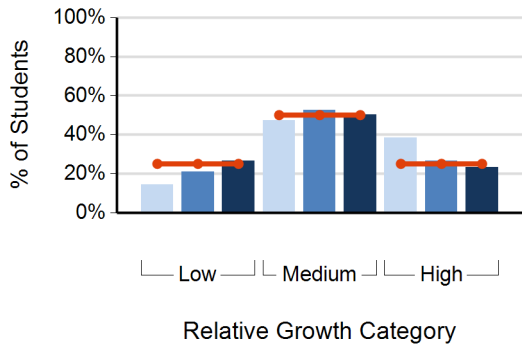
Year Level	Below NMS		At NMS	Above NMS			
Year 3	Exempt	Band 1	Band 2	Band 3	Band 4	Band 5	Band 6
Year 5	Exempt	Band 3	Band 4	Band 5	Band 6	Band 7	Band 8
Year 7	Exempt	Band 4	Band 5	Band 6	Band 7	Band 8	Band 9
Year 9	Exempt	Band 5	Band 6	Band 7	Band 8	Band 9	Band 10

## NAPLAN - Number and Percentage of Students by Band by Domain, Trend 2017 to 2019 - Year 9 Students

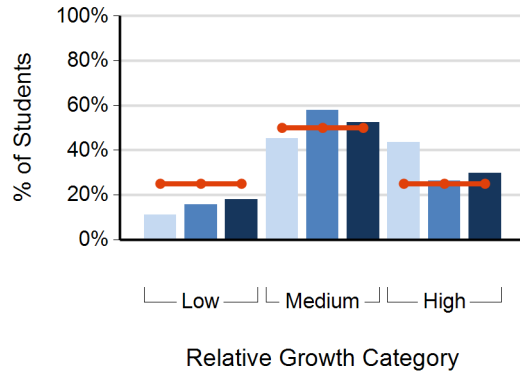
	Year	Percentage of Students							Number of Students							Mean		Participation Rate	
		Below NMS		At NMS	Above NMS				Below NMS		At NMS	Above NMS							
		Exempt	Band 5	Band 6	Band 7	Band 8	Band 9	Band 10	Exempt	Band 5	Band 6	Band 7	Band 8	Band 9	Band 10	School	State	Count	%
<b>Grammar and Punctuation</b>	2017	0.0%	4.5%	16.0%	24.4%	32.7%	12.8%	9.6%	0	7	25	38	51	20	15	583.8	562.2	156	96.3%
	2018	0.6%	5.1%	18.6%	16.0%	29.5%	19.9%	10.3%	1	8	29	25	46	31	16	587.8	573.7	156	95.7%
	2019	0.0%	6.7%	20.0%	29.7%	26.7%	9.7%	7.3%	0	11	33	49	44	16	12	576.5	566.3	165	95.4%
<b>Numeracy</b>	2017	0.0%	0.6%	5.8%	27.3%	33.8%	22.7%	9.7%	0	1	9	42	52	35	15	609.9	586.8	154	95.1%
	2018	0.6%	1.9%	7.1%	23.9%	26.5%	24.5%	15.5%	1	3	11	37	41	38	24	618.4	593.9	155	95.1%
	2019	0.0%	0.0%	11.5%	27.9%	25.5%	23.0%	12.1%	0	0	19	46	42	38	20	609.3	590.1	165	95.4%
<b>Reading</b>	2017	0.0%	2.6%	10.3%	21.8%	36.5%	21.2%	7.7%	0	4	16	34	57	33	12	600.6	572.5	156	96.3%
	2018	0.7%	2.0%	9.8%	24.2%	33.3%	17.6%	12.4%	1	3	15	37	51	27	19	604.8	581.1	153	93.9%
	2019	0.0%	1.3%	16.3%	25.0%	25.0%	21.9%	10.6%	0	2	26	40	40	35	17	598.4	576.3	160	92.5%
<b>Spelling</b>	2017	0.0%	4.5%	14.7%	21.8%	25.6%	26.3%	7.1%	0	7	23	34	40	41	11	595.6	572.2	156	96.3%
	2018	0.6%	6.4%	9.0%	26.9%	32.7%	15.4%	9.0%	1	10	14	42	51	24	14	593.0	577.5	156	95.7%
	2019	0.0%	3.6%	7.3%	37.0%	30.3%	13.9%	7.9%	0	6	12	61	50	23	13	590.9	576.8	165	95.4%
<b>Writing</b>	2017	0.0%	7.1%	16.9%	13.0%	39.0%	9.7%	14.3%	0	11	26	20	60	15	22	583.1	542.6	154	95.1%
	2018	0.6%	11.6%	21.3%	28.4%	26.5%	7.1%	4.5%	1	18	33	44	41	11	7	558.3	535.9	155	95.1%
	2019	0.0%	9.9%	13.6%	29.6%	29.0%	11.7%	6.2%	0	16	22	48	47	19	10	571.9	545.9	162	93.6%

# NAPLAN - Relative Growth by Domain, Trend 2017 to 2019 - Year 5 to Year 7

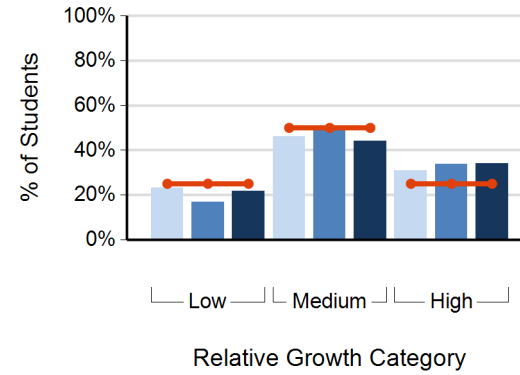
### Yearly Comparison - Grammar and Punctuation



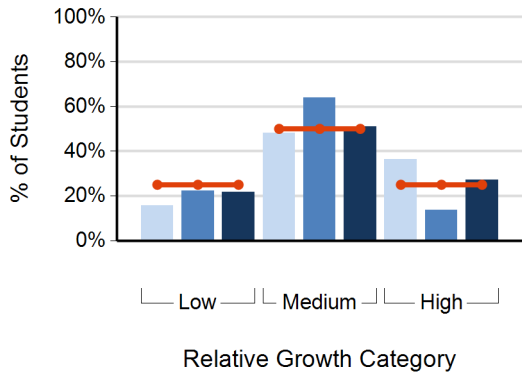
### Yearly Comparison - Numeracy



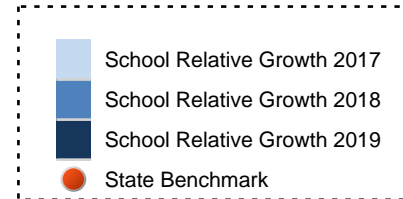
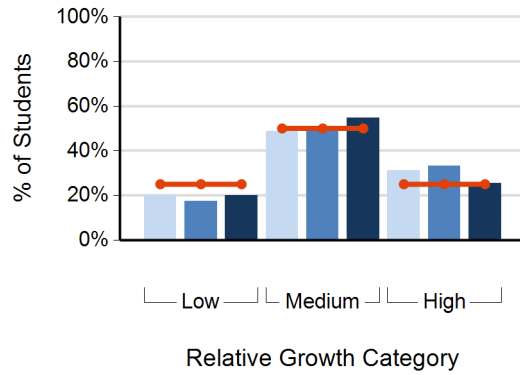
### Yearly Comparison - Reading



### Yearly Comparison - Spelling



### Yearly Comparison - Writing

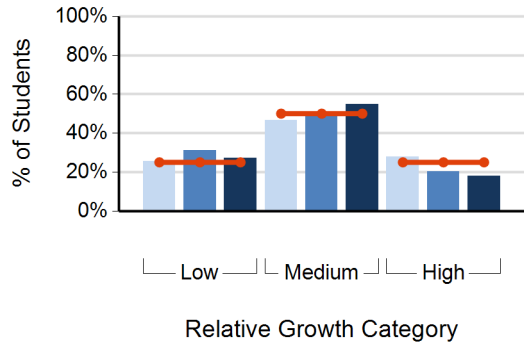


## NAPLAN - Relative Growth by Domain, Trend 2017 to 2019 - Year 5 to Year 7

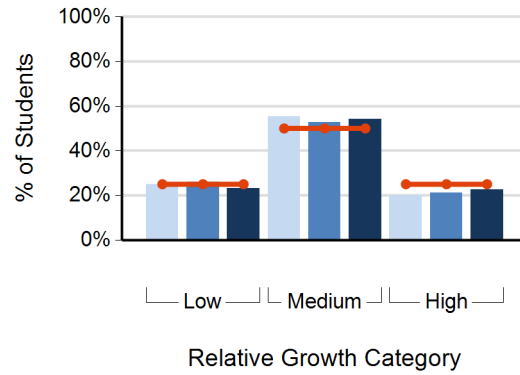
	Year	Percentage of Students			Number of Students			Matched Cohort Total
		Low	Medium	High	Low	Medium	High	
<b>Grammar and Punctuation</b>	<b>2017</b>	14.3%	47.4%	38.3%	22	73	59	154
	<b>2018</b>	20.9%	52.5%	26.6%	29	73	37	139
	<b>2019</b>	26.6%	50.3%	23.1%	38	72	33	143
<b>Numeracy</b>	<b>2017</b>	11.2%	45.4%	43.4%	17	69	66	152
	<b>2018</b>	15.7%	57.9%	26.4%	22	81	37	140
	<b>2019</b>	17.9%	52.4%	29.7%	26	76	43	145
<b>Reading</b>	<b>2017</b>	23.0%	46.1%	30.9%	35	70	47	152
	<b>2018</b>	16.9%	49.3%	33.8%	24	70	48	142
	<b>2019</b>	21.7%	44.2%	34.1%	30	61	47	138
<b>Spelling</b>	<b>2017</b>	15.6%	48.1%	36.4%	24	74	56	154
	<b>2018</b>	22.3%	64.0%	13.7%	31	89	19	139
	<b>2019</b>	21.7%	51.0%	27.3%	31	73	39	143
<b>Writing</b>	<b>2017</b>	20.1%	48.7%	31.2%	31	75	48	154
	<b>2018</b>	17.3%	49.6%	33.1%	24	69	46	139
	<b>2019</b>	19.9%	54.6%	25.5%	28	77	36	141

# NAPLAN - Relative Growth by Domain, Trend 2017 to 2019 - Year 7 to Year 9

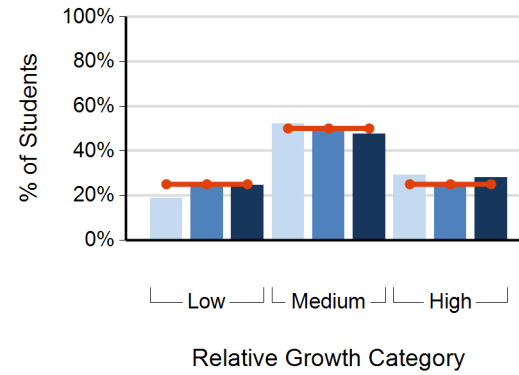
### Yearly Comparison - Grammar and Punctuation



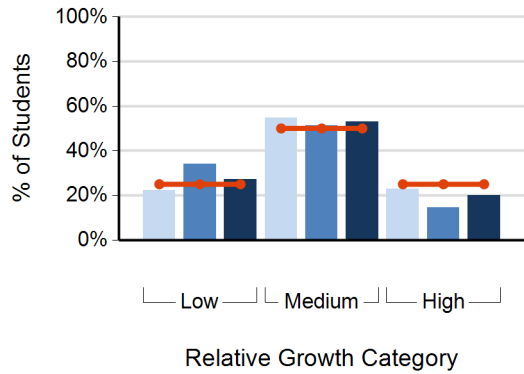
### Yearly Comparison - Numeracy



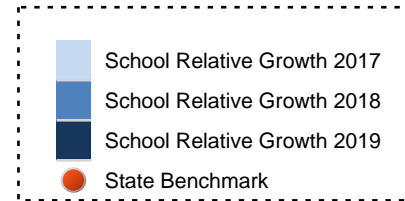
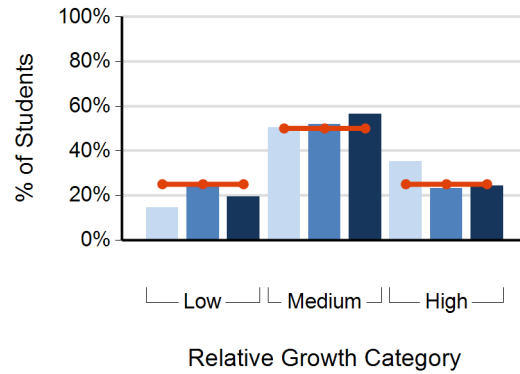
### Yearly Comparison - Reading



### Yearly Comparison - Spelling



### Yearly Comparison - Writing



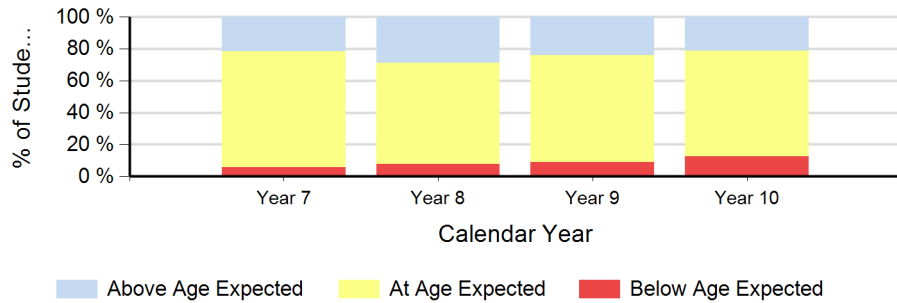


**NAPLAN - Relative Growth by Domain, Trend 2017 to 2019 - Year 7 to Year 9**

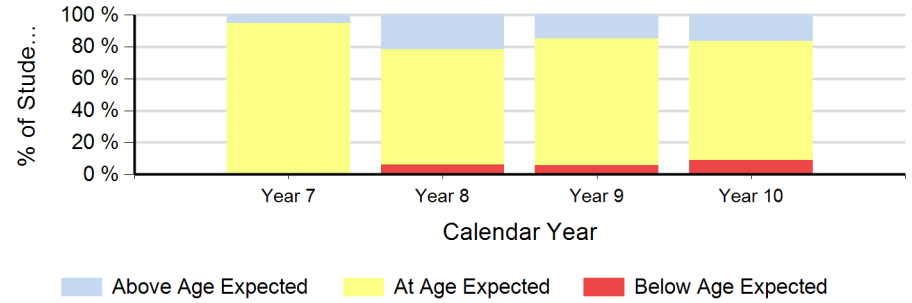
	Year	Percentage of Students			Number of Students			Matched Cohort Total
		Low	Medium	High	Low	Medium	High	
<b>Grammar and Punctuation</b>	<b>2017</b>	25.7%	46.6%	27.7%	38	69	41	148
	<b>2018</b>	31.3%	48.6%	20.1%	45	70	29	144
	<b>2019</b>	27.2%	55.0%	17.9%	41	83	27	151
<b>Numeracy</b>	<b>2017</b>	24.8%	55.2%	20.0%	36	80	29	145
	<b>2018</b>	26.1%	52.8%	21.1%	37	75	30	142
	<b>2019</b>	23.2%	54.3%	22.5%	35	82	34	151
<b>Reading</b>	<b>2017</b>	18.8%	52.1%	29.2%	27	75	42	144
	<b>2018</b>	24.8%	50.4%	24.8%	35	71	35	141
	<b>2019</b>	24.5%	47.6%	27.9%	36	70	41	147
<b>Spelling</b>	<b>2017</b>	22.3%	54.7%	23.0%	33	81	34	148
	<b>2018</b>	34.0%	51.4%	14.6%	49	74	21	144
	<b>2019</b>	27.2%	53.0%	19.9%	41	80	30	151
<b>Writing</b>	<b>2017</b>	14.5%	50.3%	35.2%	21	73	51	145
	<b>2018</b>	25.2%	51.7%	23.1%	36	74	33	143
	<b>2019</b>	19.5%	56.4%	24.2%	29	84	36	149

Teacher Judgement - Students by Rating by Year Level 2019 - Semester 1 Curriculum English

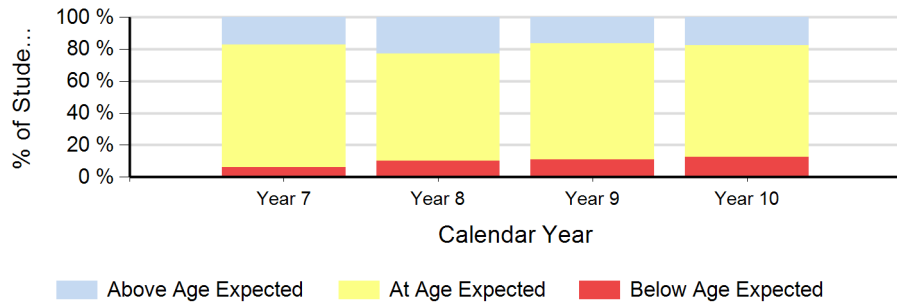
**% of Students by Rating by Year Level - Subject English - Reading and viewing**



**% of Students by Rating by Year Level - Subject English - Speaking and listening**



**% of Students by Rating by Year Level - Subject English - Writing**



## Teacher Judgement - Students by Rating by Year Level 2019 - Semester 1 Subject English

		Rating							Mean		
		Students Assessed	Percentage of Students			Number of Students			School	State	Region
Strand/Dimension			Above Age Expected	At Age Expected	Below Age Expected	Above Age Expected	At Age Expected	Below Age Expected			
Reading and viewing	Year 7	159	21.4%	73.0%	5.7%	34	116	9	6.50	6.27	6.24
	Year 8	167	28.7%	63.5%	7.8%	48	106	13	7.53	7.25	7.20
	Year 9	176	23.9%	67.0%	9.1%	42	118	16	8.47	8.22	8.15
	Year 10	166	21.1%	66.3%	12.7%	35	110	21	9.37	9.17	9.08
Speaking and listening	Year 7	159	5.0%	94.3%	0.6%	8	150	1	6.50	6.30	6.26
	Year 8	167	21.6%	72.5%	6.0%	36	121	10	7.47	7.28	7.22
	Year 9	175	14.9%	79.4%	5.7%	26	139	10	8.45	8.23	8.18
	Year 10	166	16.3%	74.7%	9.0%	27	124	15	9.40	9.19	9.09
Writing	Year 7	159	17.0%	76.7%	6.3%	27	122	10	6.45	6.19	6.11
	Year 8	167	22.8%	67.1%	10.2%	38	112	17	7.44	7.20	7.13
	Year 9	176	16.5%	72.7%	10.8%	29	128	19	8.36	8.18	8.08
	Year 10	166	17.5%	69.9%	12.7%	29	116	21	9.32	9.13	9.04

---

## Teacher Judgement - Students by Rating by Year Level 2019 - Semester 2 Curriculum English

No Data Available

No Data Available

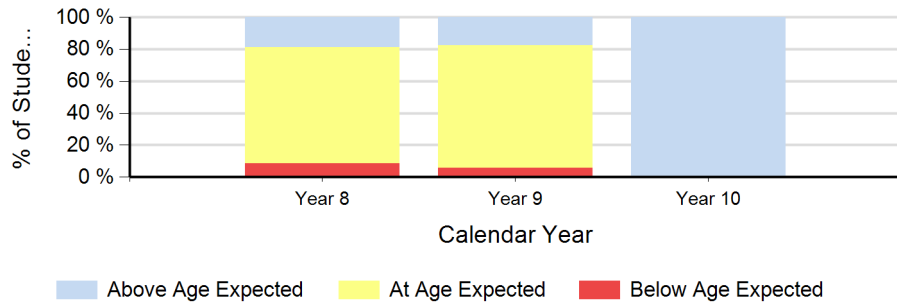
---

**Teacher Judgement - Students by Rating by Year Level 2019 - Semester 2 Subject English**

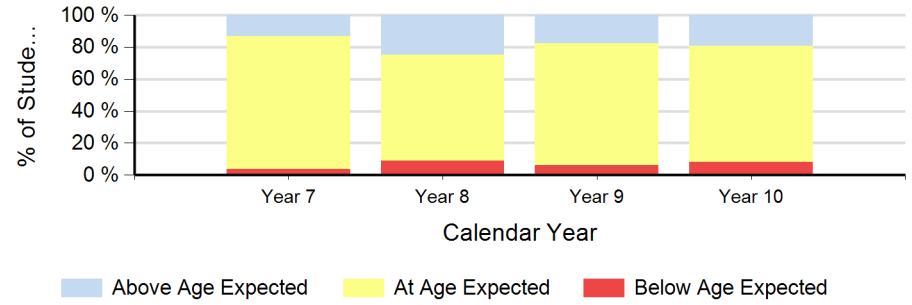
No Data Available

Teacher Judgement - Students by Rating by Year Level 2019 - Semester 1 Curriculum Mathematics

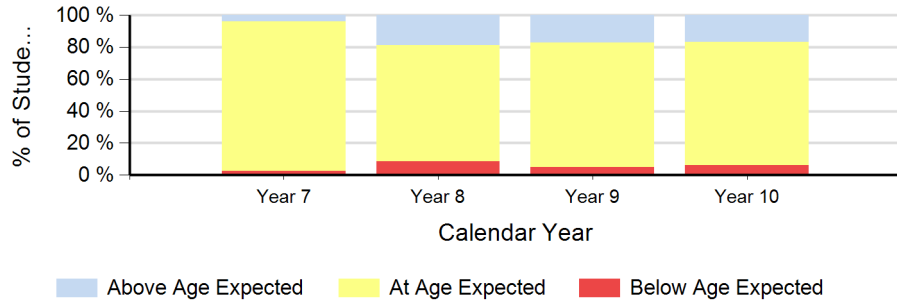
**% of Students by Rating by Year Level - Subject Mathematics - Measurement and geometry**



**% of Students by Rating by Year Level - Subject Mathematics - Number and Algebra**



**% of Students by Rating by Year Level - Subject Mathematics - Statistics and probability**



Teacher Judgement - Students by Rating by Year Level 2019 - Semester 1 Subject Mathematics

		Rating							Mean		
		Students Assessed	Percentage of Students			Number of Students			School	State	Region
Strand/Dimension			Above Age Expected	At Age Expected	Below Age Expected	Above Age Expected	At Age Expected	Below Age Expected			
Measurement and geometry	Year 8	165	18.8%	72.7%	8.5%	31	120	14	7.52	6.96	6.89
	Year 9	176	17.6%	76.7%	5.7%	31	135	10	8.53	7.97	7.94
	Year 10	25	100.0%	0.0%	0.0%	25	0	0	10.36	8.88	8.75
Number and Algebra	Year 7	159	13.2%	83.0%	3.8%	21	132	6	6.49	6.06	6.01
	Year 8	166	24.7%	66.3%	9.0%	41	110	15	7.54	7.04	6.98
	Year 9	177	17.5%	76.3%	6.2%	31	135	11	8.52	7.96	7.93
	Year 10	168	19.0%	72.6%	8.3%	32	122	14	9.46	8.91	8.85
Statistics and probability	Year 7	159	3.8%	93.7%	2.5%	6	149	4	6.45	6.12	6.06
	Year 8	160	18.8%	72.5%	8.8%	30	116	14	7.50	7.06	7.01
	Year 9	176	17.0%	77.8%	5.1%	30	137	9	8.54	7.97	7.89
	Year 10	167	16.8%	77.2%	6.0%	28	129	10	9.53	8.85	8.72

---

**Teacher Judgement - Students by Rating by Year Level 2019 - Semester 2 Curriculum Mathematics**

No Data Available

No Data Available

---

**Teacher Judgement - Students by Rating by Year Level 2019 - Semester 2 Subject Mathematics**

No Data Available



## Secondary School Education Summary, Trend 2017 to 2019

### VCE Completing Cohort

Year	School - No of Students who were eligible to complete VCE	School - No of Students who completed VCE	School - % of VCE completions	State - % of VCE completions
2017	151	148	98.0%	96.8%
2018	141	140	99.3%	97.2%

### VCE Study Score (school outcome) - All Studies and All year levels

Year	School - No. of students who had at least one VCE study score	School - Study Score Mean	State - Study Score Mean	School - No of students with at least one VCE study score of 40 or more in the year	School - % of students with at least one VCE study score of 40 or more in the year	State - % of students with at least one VCE study score of 40 or more in the year	School - Total number of all VCE study scores	School - % of VCE study scores of 40 or more	State - % of VCE study scores of 40 or more
2017	216	31.28	28.79	45	20.8%	14.2%	795	8.9%	6.3%
2018	200	31.01	28.86	50	25.0%	14.7%	748	10.0%	6.6%

### VCE Students with VET

Year	School - No of VCE Students who completed at least one VET UOC	School - % of VCE Students who completed at least one VET UOC	State - % of VCE Students who completed at least one VET UOC	School - % of VCE Program from VET	State - % of VCE Program from VET
2017	6	4.1%	26.9%	0.6%	4.7%
2018	9	6.4%	26.6%	1.1%	4.5%

### VCAL

Year	School - No of Students who were enrolled in VCAL certificate		School - No of Students who completed the VCAL certificate	
	VCAL - Intermediate	VCAL - Senior	VCAL - Intermediate	VCAL - Senior
2017	19	17	14	16
2018	19	19	12	19

## Secondary School Education, Trend 2017 to 2019

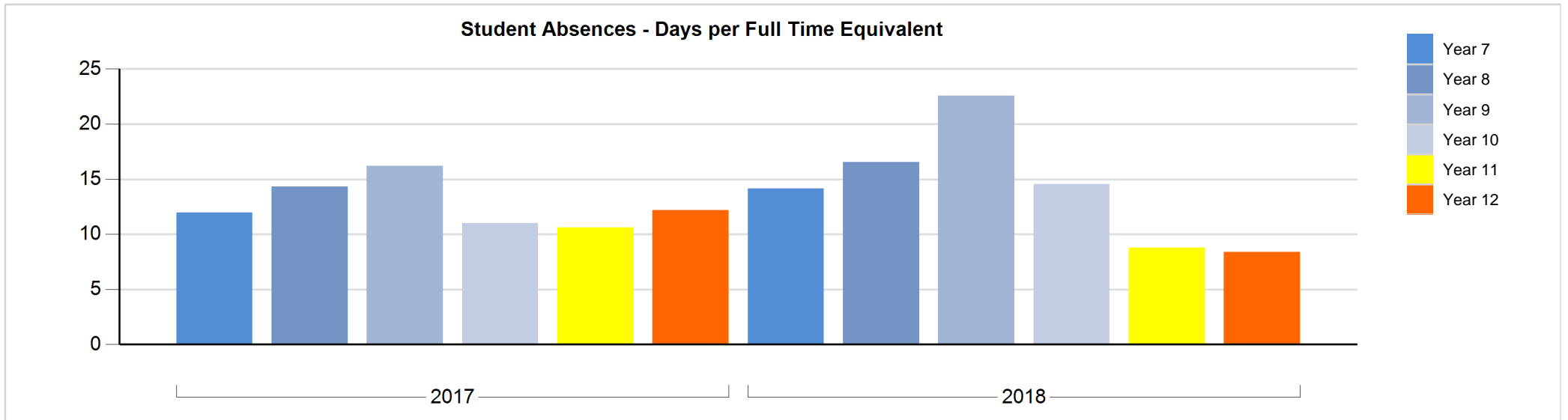
		School - No of Students who received a score		School - Study Score Mean		State - Study Score Mean	
Study Group	Subject	2017	2018	2017	2018	2017	2018
Business Studies	Accounting	24	31	29.00	28.52	29.43	29.69
	Business Management	55	42	29.84	30.64	28.56	28.63
	Economics	17	13	33.18	31.31	29.58	29.65
	Legal Studies	20	33	29.30	32.45	28.54	28.60
English	English	135	131	31.28	30.31	28.20	28.26
	English (ESL)	11	9	31.91	34.56	30.52	30.15
	Literature	2	20	36.00	27.95	28.37	28.66
Health and Physical Education	Health and Human Development	45	46	30.69	30.96	28.82	28.87
	Physical Education	31	26	31.90	32.19	28.12	28.10
Humanities	Global Politics	13		33.38		28.48	28.66
	History (Revolutions)	10	11	36.20	34.27	28.42	28.53
Mathematics	Further Mathematics	95	94	30.86	32.28	28.75	28.86
	Mathematical Methods (CAS)	58	57	29.90	30.12	29.42	29.40
	Specialist Mathematics	12	11	28.92	34.09	29.33	29.23
Science	Biology	39	28	31.90	31.43	28.99	28.92
	Chemistry	45	36	31.40	32.19	29.09	29.17
	Physics	13	20	34.69	33.10	29.38	29.24
	Psychology	34	31	33.74	30.35	28.89	29.03
Technology	Food and Technology		11		31.55	28.83	28.66
	Information Systems	11		31.55		30.01	29.85
The Arts	Drama	8	13	33.25	30.00	27.76	28.15
	Media	24	23	33.17	31.13	28.64	29.07
	Music Performance	10	10	31.50	28.40	28.61	28.54
	Studio Arts	15	17	35.47	31.88	28.85	28.74
	Visual Communication and Design	24		31.58		28.41	28.84
VCE Languages	Chinese First Language	6	1	28.50	25.00	29.19	29.41

		School - No of Students who received a score		School - Study Score Mean		State - Study Score Mean	
Study Group	Subject	2017	2018	2017	2018	2017	2018
VCE Languages	Chinese Second Language	3		25.67		30.67	30.30
	Chinese Second Language Advanced	1	1	19.00	27.00	28.73	29.12
	Classical Greek	1		18.00		27.38	26.33
	German	10	16	24.50	27.63	28.61	28.94
	Greek	1	2	33.00	32.00	30.71	30.11
	Indonesian Second Language	1		50.00		29.25	29.13
	Italian	1	1	30.00	43.00	29.25	30.32
	Japanese Second Language	14	8	30.64	27.75	29.67	29.78
	Korean Second Language		1		23.00	29.84	28.78
	Punjabi	1		43.00		30.54	28.19
	Spanish	1		32.00		30.69	29.62
	Turkish		1		43.00	27.79	29.74
	Vietnamese		1		31.00	30.91	30.72
	Vietnamese First Language	4		35.50		29.61	30.04
VET in Schools	Dance (VCE VET)		2		30.50	30.29	30.27
	Music Ind - Sound Production (VCE VET)		1		37.00	29.41	29.26

## Student Absences, Trend 2017 to 2019 - Days per Full Time Equivalent by Year Level

### Student Absences - Days per Full Time Equivalent by Year Level

	School		State	
	2017	2018	2017	2018
Year 7	11.99	14.18	16.80	17.10
Year 8	14.34	16.55	20.70	21.05
Year 9	16.21	22.58	22.96	22.94
Year 10	11.00	14.55	20.19	20.51
Year 11	10.63	8.80	17.33	17.54
Year 12	12.19	8.42	15.61	15.73
Year 7 - Year 12	12.77	14.54	19.19	19.39



**Student Absences - Days per Full Time Equivalent by Year Level and Absence Type**

		Year 7	Year 8	Year 9	Year 10	Year 11	Year 12	School Mean
2017	Bereavement	0.10	0.12	0.11	0.19	0.30	0.28	0.18
	Dentist	0.20	0.22	0.26	0.15	0.06	0.02	0.16
	Family Holiday	2.49	2.52	2.43	1.55	0.70	0.10	1.71
	Hospitalised	0.02	0.03					0.01
	Illness	4.48	4.67	4.77	2.46	1.60	1.15	3.30
	Medical	0.67	0.65	0.64	1.88	3.25	5.80	1.99
	Medical Appointment	0.07	0.04	0.04	0.03	0.03	0.02	0.04
	Parent Choice School Approved	1.56	1.23	1.76	0.82	0.99	0.54	1.18
	Parent Choice Unauthorised	0.01			0.01	0.30	0.02	0.05
	Refusal	0.25	0.73	0.92		0.24		0.37
	Religious/Cultural Observance	0.01	0.03	0.02		0.02	0.00	0.02
	School Choice	0.01	0.03	0.02	0.00	0.00		0.01
	Suspension - External	0.03	0.07	0.01	0.06	0.03	0.09	0.05
	Truancy	0.05	0.11	0.22	0.03	0.41		0.14
	Unexplained	2.05	3.89	5.00	3.82	2.69	4.17	3.57
Year Level Mean	11.99	14.34	16.21	11.00	10.63	12.19	12.77	
2018	Accident			0.02				0.00
	Bereavement	0.18	0.21	0.28	0.19	0.25	0.23	0.22
	Dentist	0.26	0.35	0.30	0.14	0.10	0.06	0.21
	Family Holiday	2.24	3.35	3.01	2.48	0.34	0.17	2.05
	Hospitalised	0.02						0.00
	Illness	5.44	5.62	6.74	4.23	2.34	1.94	4.53
	Medical	0.67	0.66	0.64	0.92	1.73	1.60	1.00
	Medical Appointment	0.04	0.08	0.03	0.02	0.02	0.02	0.03
	Medical/Welfare					0.03		0.00
	Parent Choice School Approved	2.48	2.82	3.70	1.12	1.09	1.21	2.13
Parent Choice Unauthorised	0.04	0.04	0.09	0.10	0.03		0.05	

		Year 7	Year 8	Year 9	Year 10	Year 11	Year 12	School Mean
<b>2018</b>	<b>Refusal</b>	0.08	0.60	3.48	0.01	0.28		0.78
	<b>Religious/Cultural Observance</b>	0.07		0.06	0.07	0.08	0.05	0.05
	<b>School Choice</b>	0.00	0.00	0.02	0.02	0.01		0.01
	<b>Suspension - External</b>	0.03		0.05	0.04	0.03	0.04	0.03
	<b>Truancy</b>	0.15	0.48	0.53	0.40	0.13	0.04	0.30
	<b>Unexplained</b>	2.48	2.33	3.62	4.85	2.35	3.06	3.13
	<b>Year Level Mean</b>	14.18	16.55	22.58	14.55	8.80	8.42	14.54

## School Financial Data Report - Yearly Operating Position

School Details	Enrolment Group	Group Count	Reporting Month
	Secondary 801 - 1200	73	Dec 2018

### Operating Position - Total Dollars

School Year	Revenue			Expenditure			Operating Position	
	Net SRP (Credit)*	CASES 21 (Cash)	Revenue Total	SRP (Credit)	CASES 21 (Cash)	Expenditure Total	% Spent	Variance
2016(Dec)	\$7,765,872	\$2,391,346	\$10,157,219	\$7,916,160	\$2,181,289	\$10,097,449	99%	\$59,770
2017(Dec)	\$8,228,967	\$2,656,244	\$10,885,211	\$8,293,580	\$2,901,646	\$11,195,226	103%	-\$310,014
2018(Dec)	\$8,537,076	\$2,618,926	\$11,156,002	\$8,699,409	\$2,429,789	\$11,129,198	100%	\$26,804

### Operating Position - Per Student Dollars

School Year	Revenue			Expenditure			Operating Position	
	Net SRP (Credit)*	CASES 21 (Cash)	Revenue Total	SRP (Credit)	CASES 21 (Cash)	Expenditure Total	% Spent	Variance
2016(Dec)	\$8,300	\$2,556	\$10,855	\$8,460	\$2,331	\$10,791	99%	\$64
2017(Dec)	\$8,495	\$2,742	\$11,237	\$8,562	\$2,995	\$11,557	103%	-\$320
2018(Dec)	\$8,827	\$2,708	\$11,534	\$8,994	\$2,512	\$11,507	100%	\$28

### Operating Position - Average Total Dollars by Enrolment Group

School Year	Revenue			Expenditure			Operating Position	
	Net SRP (Credit)*	CASES 21 (Cash)	Revenue Total	SRP (Credit)	CASES 21 (Cash)	Expenditure Total	% Spent	Variance
2016(Dec)	\$7,765,872	\$2,391,346	\$10,157,219	\$7,916,160	\$2,181,289	\$10,097,449	99%	\$59,770
2017(Dec)	\$8,228,967	\$2,656,244	\$10,885,211	\$8,293,580	\$2,901,646	\$11,195,226	103%	-\$310,014
2018(Dec)	\$8,537,076	\$2,618,926	\$11,156,002	\$8,699,409	\$2,429,789	\$11,129,198	100%	\$26,804

\* Includes SRP Adjustments